



Alliant  
International  
University

SAN DIEGO  
CAMPUS

RELOCATION  
GUIDE



## WELCOME TO ALLIANT!

Hi Everyone! Welcome to the Alliant family! We are excited to help you in whichever way we can as you enter into the Alliant community. Please email at [admissions@alliant.edu](mailto:admissions@alliant.edu) with any comments, questions, or concerns about the information below.

## RELOCATION GUIDE | SANDIEGO

This relocation guide has been updated to give you the most current resources for getting around town, finding a place to live, and getting to know and love sunny San Diego! Please understand that this guide is a compilation of recommended resources from students, faculty and staff, and does not guarantee the service you will receive. Please also keep in mind that there are many great resources that are not mentioned in this guide. We hope you will enjoy these and other places as much as we have!

In the pages that follow you will find:

- Suggestions and resources for finding a place to live
- City and neighborhood information.
- Driving and public transportation information
- Directions to the San Diego campus and parking instructions
- Suggestions and resources to help you settle in and begin to explore the area when you arrive, including basic necessities, food, and entertainment

## ROOMATE MATCHING

One of the immediate challenges that many new students face is relocation to (or within) the San Diego area. There are Alliant **Facebook** groups where students can communicate and potentially find roommates. Please see the link and information below. **Alliant International University does not match roommates nor does it assume responsibility for matches that are made using Social Media Platforms. Alliant International University's only role is to help facilitate this communication process.**

Students are responsible for contacting one another to discuss housing options. Alliant International University will not serve as an intermediary between students who are seeking housing.

**CSPP Facebook Group:** <https://www.facebook.com/groups/470685557250179>

**CSOE Facebook Group:** <https://www.facebook.com/groups/1323561564693115>

**CSML and Online Programs Facebook Group:** <https://www.facebook.com/groups/951936162005142/>

## FINDING A PLACE TO LIVE

Visit these sites to find local apartments, sublets and roommate listings.

- Craigslist <https://sandiego.craigslist.org>
- Hotpads <https://www.hotpads.com>
- San Diego Union Tribune <https://www.sandiegouniontribune.com>
- SDReader <https://www.sdreader.com>
- Lovely <https://livelovely.com/>

For more information about different neighborhoods of San Diego, please check out the links below:

- <https://www.sandiego.org>
- <https://www.sandiego.gov/planning/community/profiles>

### Coastal cities and communities

- Carlsbad <http://www.carlsbadca.gov>
- Del Mar <http://www.delmar.ca.us/>
- Encinitas <http://encinitasca.gov/>
- La Jolla <https://www.sandiego.org/explore/coastal/la-jolla.aspx>
- Leucadia [http://www.sandiego.org/article\\_set/Visitors/5/29](http://www.sandiego.org/article_set/Visitors/5/29)
- Mission Beach [http://www.sandiego.org/article\\_set/Visitors/5/41](http://www.sandiego.org/article_set/Visitors/5/41)
- Oceanside <http://www.ci.oceanside.ca.us/>
- Pacific Beach [http://www.sandiego.org/article\\_set/Visitors/5/39](http://www.sandiego.org/article_set/Visitors/5/39)
- Solana Beach <http://www.ci.solana-beach.ca.us/>

### Inland cities and communities

- Escondido <http://www.ci.escondido.ca.us/>
- La Mesa <http://www.cityoflamesa.com/>
- Poway <http://poway.org/>
- Rancho Bernardo <https://www.sandiego.gov/citycouncil/cd5/communities/ranchobernardo>
- San Diego <http://www.sandiego.gov/>
- San Diego - downtown area <https://downtownsandiego.org/neighborhoods/>
- Santee <http://www.cityofsanteca.gov/>

## San Diego City/County Facts

- San Diego Crime Stats <https://www.sandiego.gov/police/services/statistics>
- San Diego Regional Economic Development Program <http://www.sandiegobusiness.org/>

## Relocation Info

### National Relocation

<http://www.nationalrelocation.com/>

### Moving Services

<https://www.thumbtack.com/ca/san-diego/movers/>

## TEMPORARY ACCOMMODATIONS

If you need a place to stay just for a few days while looking for an apartment:

- San Diego Hostels <https://www.hostelworld.com/findabed.php/ChosenCity.San-Diego/ChosenCountry.USA>
- Airbnb <https://www.airbnb.com/>
- Craigslist <https://sandiego.craigslist.org/> also dedicates part of their site to sublets.

Hotels near campus **Holiday Inn, Best Western, Holiday Inn Express, Residence Inn, Spring Hill Suites, La Quinta.**— use internet sites like [www.expedia.com](http://www.expedia.com) or [www.hotels.com](http://www.hotels.com) or [www.priceline.com](http://www.priceline.com) for the best rates

\*Alliant students also get a discount at the local **Holiday Inn**, just a few blocks down from campus.

## MOVING EXPENSES

Most landlords will ask you to pay the first and last month's rent and a security deposit before you move in. However, some apartment complexes in San Diego have move in specials as well. According to state law, any payment beyond the first month's rent, no matter what the landlord calls it, is a "security" deposit and is refundable if, when you leave, the place is clean and undamaged and the rent is all paid. California state law also limits the amount of advance money your landlord can require. Total advance money cannot be more than twice your rent for unfurnished places, and three times your rent for furnished. You may need to use a cashier's check as landlords may not accept an out of town check.

## TENANT RIGHTS

View or download this guide for residential tenants and landlord's rights and responsibilities.

**California Tenant Rights** - <https://www.hcd.ca.gov/manufactured-mobile-home/mobile-home-ombudsman/docs/tenant-landlord.pdf>

## More resources and great articles on different neighborhoods and moving to San Diego:

[https://www.sandiegomagazine.com/san-diego-newcomers-guide/collection\\_fd1926c0-40b9-5953-9a20-32fa19d156dd.html](https://www.sandiegomagazine.com/san-diego-newcomers-guide/collection_fd1926c0-40b9-5953-9a20-32fa19d156dd.html)

<https://www.redfin.com/resources/moving-to-san-diego-neighborhood-guide>

## HAVING A CAR IN SAN DIEGO

If you plan on having a car in CA, you should know some basic information about registering your car and getting a California driver's license, as well as some tips for parking in the city. The California Department of Motor Vehicles has a great section of their website dedicated to information for new California residents.

<https://www.dmv.ca.gov/portal/dmv/detail/newtoca/newtoca>

## TRANSPORTATION

The San Diego area public transportation systems can be found online:

- SD Commute <http://511sd.com/sd511/transit/transithome.aspx>
- San Diego Metropolitan Transit System <https://www.sdmts.com/home>
- San Diego Coaster schedule <http://www.gonctd.com/coaster/>
- Amtrak <https://www.amtrak.com>
- San Diego MTS bus schedule <https://www.sdmts.com/schedules-real-time-maps-and-routes/bus-routes>
- Google Transit - Step by step transit directions <https://www.google.com/intl/en/landing/transit/#mdy>

Information can also be found online for Rideshare programs:

- Carpool World [http://www.carpoolworld.com/ride.html?to=SAN\\_DIEGO&ws=CA&country=USA,US&form\\_language=EN](http://www.carpoolworld.com/ride.html?to=SAN_DIEGO&ws=CA&country=USA,US&form_language=EN)
- MTS Access <https://www.sdmts.com/rider-info-accessibility/mts-access>

Private transportation services are available through:

- Uber: <http://www.uber.com>
- Lyft: <http://www.Lyft.com>

## DRIVING DIRECTIONS

The San Diego campus is located at: **10455 Pomerado Rd, San Diego, CA 92131**

These driving directions lead to the front entrance of the University. Parking information is included at the end of this section.

### From I-15

- Exit at Miramar Road/Pomerado Road
- Go East on Miramar Road/Pomerado Road approximately a ½ mile
- Turn Right (South) onto Avenue of Nations/Willow Creek Rd (trafficlight)
- Follow the road past the Middle School and pass the security booth in middle of road

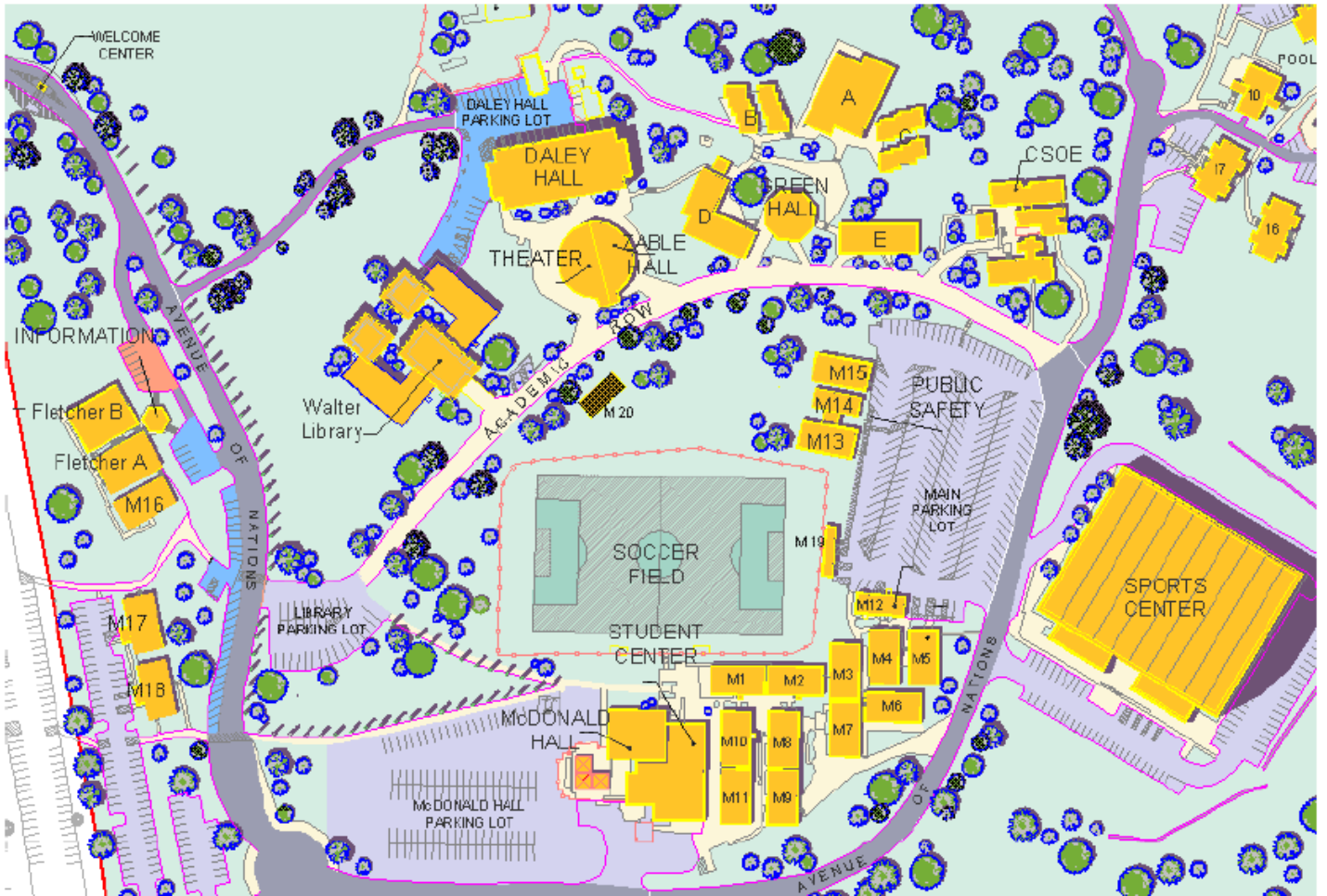
\*The I-15 freeway is the closest freeway. We are about 5 miles south of the 15 and 56 freeway intersection; and about 2 miles north of the 15 and 52 freeway intersection

### From I-5 or I-805

- Take the 52 freeway East to the 15 North
- Exit at the second exit which is Miramar Road/Pomerado Road and turn right (East) onto Pomerado Road
- Make a right at your first traffic light onto Avenue of Nations

OR

- Take the 56 freeway east to the 15 South
- Exit at Miramar Road/Pomerado Road
- Turn left
- Go about one mile and make a right onto Avenue of nations (traffic light)



## GROCERY SHOPPING

- Albertsons | <https://www.albertsons.com>
- Aldi | <https://aldi.com/>
- Trader Joes | <http://www.traderjoes.com>
- Sprouts | <http://www.Sprouts.com>
- Whole Foods | <http://www.wholefoodsmarket.com>
- Vons | <http://www.vons.com>
- Ralphs | <https://www.ralphs.com>
- Costco | <https://www.costco.com> (Membership is required)
- Smart & Final | <http://www.smartandfinal.com>

## Restaurants

San Diego offers a variety of options when you're dining out. The websites below are great restaurant guides and allow you to refine your search by location, cuisine, and price.

- <http://www.sandiegorestaurants.com/>
- <https://www.zomato.com/san-diego>
- <http://www.yelp.com/c/san-diego/restaurants>
- <https://sandiego.eater.com/>

## EATERIES NEAR THE ALLIANT – SAN DIEGO CAMPUS

### Mexican

- Chipotle Mexican Grill | 8250 Mira Mesa Blvd G, San Diego, CA 92126
- El Patron | 9460 Mira Mesa Blvd, San Diego, CA 92126
- Consuelo's Authentic Mexican | 10006 Scripps Ranch Blvd, San Diego, CA 92131

### Asian

- Watami Sushi | 9978 Scripps Ranch Blvd, San Diego, CA92131
- Little Sheep Mongolian Hot Pot | 9841 Mira Mesa Blvd, San Diego, CA 92131
- 40N Pho and Grille | 9978 Scripps Ranch Blvd, San Diego, Ca 92131
- Todo Sushi | 9823 Carroll Canyon Rd, San Diego, CA92131
- California Thai Café | 9550 Black Mountain Rd, San Diego, CA 92126

### Italian/Pizza

- Flippin Pizza | 10006 Scripps Ranch Blvd, San Diego, CA92131
- Little Italy Bar & Grill | 10006 Scripps Ranch Blvd, San Diego, CA 92131



## Sandwiches

- Panera Bread | 10751 Westview Pkwy, San Diego, CA 92126
- Subway | 9823 Carroll Canyon Rd G, San Diego, CA 92131
- Chez Nous | 9821 Carroll Canyon Rd e, San Diego, CA 92131

### Café's and Juice Bars

- Jamba Juice | 10724 Westview Pkwy, San Diego, CA 92126
- Starbucks | 10000 Aviary Dr a, San Diego, CA 92131

### Burgers, Fast Food & more

- Board & Brew | 9880 Hibert St, San Diego, CA 92131
- Bruski's Burgers & Brew | 9844 Hibert St, San Diego, CA 92131
- Mimi's Cafe | 10788 Westview Pkwy, San Diego, CA 92126
- IHOP | 9449 Kearny Mesa Rd, San Diego, CA 92126
- Island's Restaurant | 10669 Westview Pkwy, San Diego, CA 92126
- Cold Stone Ice Cream | 10716 Westview Pkwy, San Diego, CA 92126
- Carl's Jr. | 9360 Kearny Mesa Rd, San Diego, CA 92126

## ENTERTAINMENT

There is so much to do in San Diego! Below I have listed some of my favorite things to do and places to go, but I encourage you to explore the city and use the internet and your fellow students to discover fun things to do – the possibilities are endless! Again, the [SD Reader](#) and the Thursday edition of the [SD Union Tribune](#) are also a great resource for events.

- [Balboa Park](https://www.balboapark.org/) <https://www.balboapark.org/>
- [San Diego Zoo](http://zoo.sandiegozoo.org/) <http://zoo.sandiegozoo.org/>
- [San Diego Sea World](https://www.seaworld.com/) <https://www.seaworld.com/>
- [San Diego Padres](https://www.mlb.com/padres) (Professional Baseball) <https://www.mlb.com/padres>
- [San Diego Gulls](http://www.sandiegogulls.com/) (Professional Hockey, AHL) <http://www.sandiegogulls.com/>
- [Old Town](http://www.oldtownsandiegoguide.com/) <http://www.oldtownsandiegoguide.com/>
- [Popular Music Venues](https://www.sandiego.org/articles/music/san-diegos-live-music-venues.aspx)  
<https://www.sandiego.org/articles/music/san-diegos-live-music-venues.aspx>
- 
- [Hiking Trails](https://www.sdparks.org/content/sdparks/en/buttons/TrailsButton.html) <https://www.sdparks.org/content/sdparks/en/buttons/TrailsButton.html>
- [San Diego Beaches](https://www.sandiego.org/explore/things-to-do/beaches-bays.aspx) <https://www.sandiego.org/explore/things-to-do/beaches-bays.aspx>
- [Sport and Social Clubs](https://www.govavi.com/) <https://www.govavi.com/>
- [Whale Watching](http://sdwhalewatch.com/) <http://sdwhalewatch.com/>
- [Visit Julian, CA](http://www.visitjulian.com/) <http://www.visitjulian.com/>
- [Visit Temecula, CA](http://www.visittemeculavalley.com/) <http://www.visittemeculavalley.com/>
- [California Winter Recreation and Sports](http://www.onthesnow.com/california/ski-resorts.html) <http://www.onthesnow.com/california/ski-resorts.html>
- [Visit California](http://www.visitcalifornia.com/) <http://www.visitcalifornia.com/>

*This document is intended as a resource for students; the websites provided are not officially endorsed by, or*

*affiliated with, Alliant International University.*

**ALLIANT.EDU**  
**866.825.5426**

SAN DIEGO | LOS ANGELES | SAN FRANCISCO  
FRESNO | SACRAMENTO | IRVINE | ONLINE

Alliant is a private university accredited by the Western Association of Schools and Colleges (WASC). We are an equal opportunity employer and educator. For more information about our graduation rates, the median debt of students who completed the program, and other important information, please visit our website at, [www.alliant.edu/consumer](http://www.alliant.edu/consumer).

